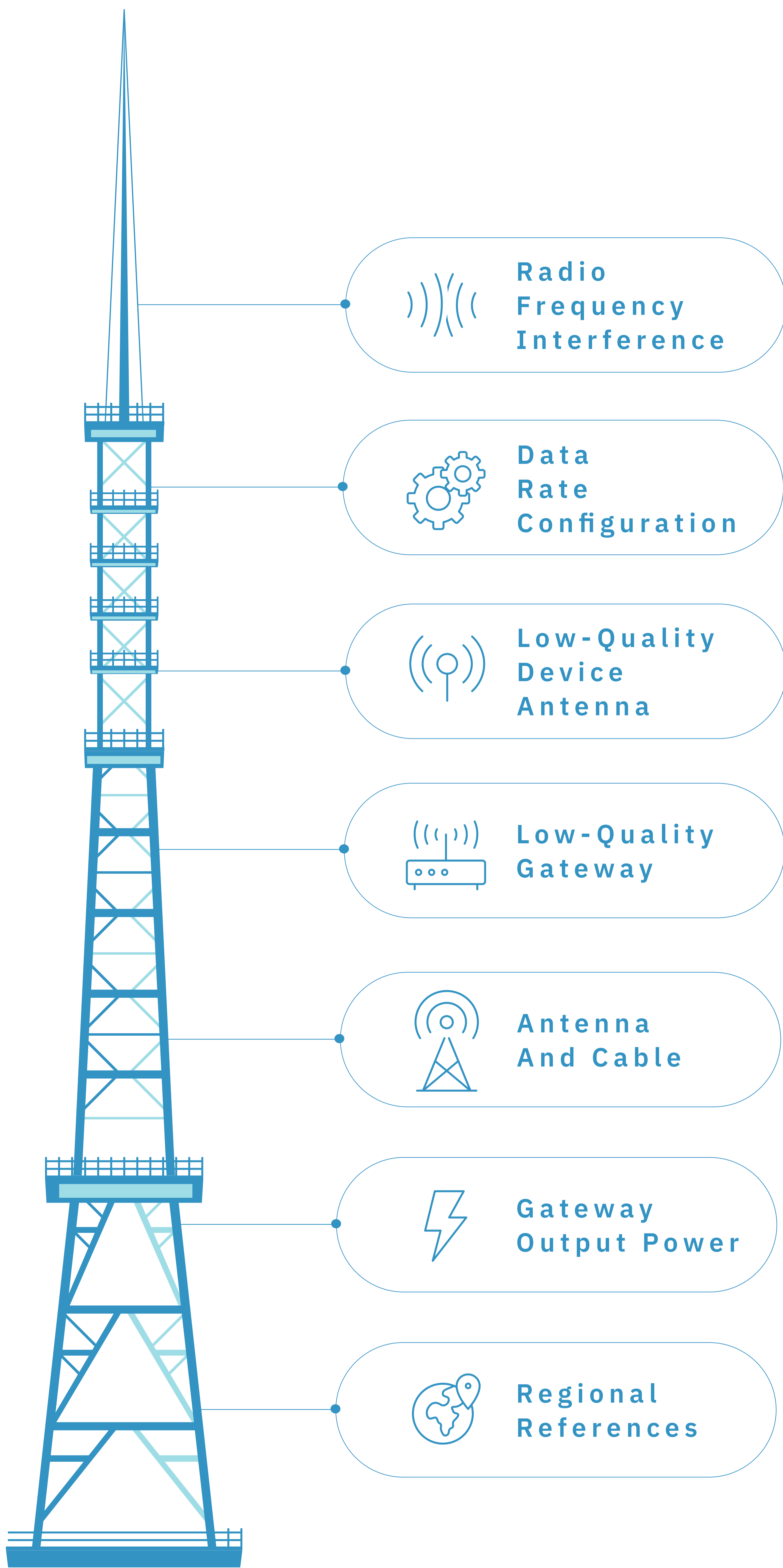


Troubleshooting LoRaWAN®:

7 Factors That Impact Coverage and How to Solve Them



Effective Steps to Address the Root Causes of Coverage Issues:

COMPONENT CHECK:

- Evaluate the integration of all components in the system, including devices and gateways.
- Verify proper device configuration, ensuring maximum transmit power and appropriate data rates.
- Check the quality of antennas, cables, and connectors for both devices and gateways.

DIAGNOSTIC STEPS:

- Run test configurations before purchasing and stay vigilant for deceptive antenna performance.
- Prioritize professional-grade antennas for gateways and devices.
- Seek expert advice on how to adjust your network for your specific use cases.

FREQUENCY CONSIDERATIONS:

- Investigate potential radio frequency interference and high noise levels at gateways.
- Understand the impact of frequency channels, especially in systems with varying LoRaWAN® standards.
- Consider regional differences when adjusting device data rates and gateway output power.

